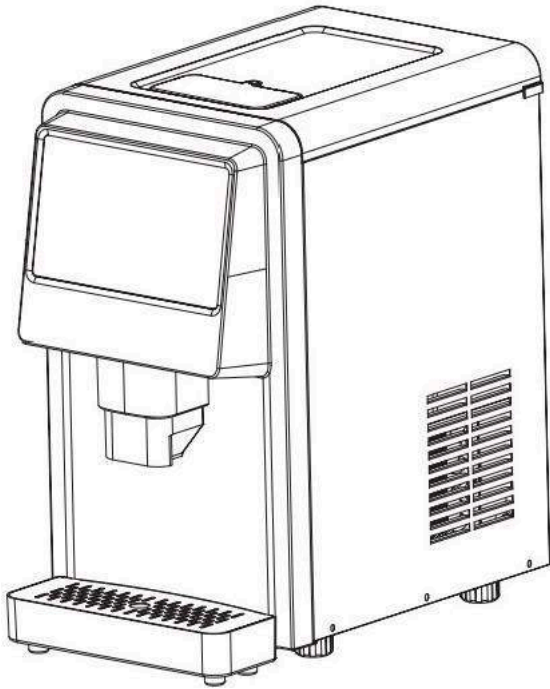


# INSTRUCTION MANUAL



It is important that you read these instructions carefully and keep it for future reference. The picture is for reference only. Please be subject to the actual products.

Email Address: [support@tittla.com](mailto:support@tittla.com)

Phone Number: +1 650 620 1310

**READ ALL INSTRUCTIONS BEFORE USING**

SAFETY INFORMATION ..... 1

Quick introduction: ..... 3

Installation and setup ..... 4

Installation requirements ..... 4

Prepare for use ..... 6

Connect to water and drain pipe ..... 6

Understanding the display ..... 6

Clean and care ..... 8

Common malfunction analysis: ..... 9

## SAFETY INFORMATION



This is the safety alert symbol. This symbol alerts you to potential hazards that can kill or hurt you and others. All safety messages will follow the safety alert symbol and the word “WARNING” or “CAUTION”. These words are defined as:



**WARNING**

Indicates a hazardous situation which, if not avoided, could result in death or serious injury.



**CAUTION**

Indicates a hazardous situation which, if not avoided, could result in minor or moderate injury.



**CAUTION**

ICE CAN'T BE STORED IN THE ICE BIN DURING NIGHT TIME, IT'S NOT FRIDGE, ICE WILL BE MELTED INTO WATER AND FLOW OUT OF THE MACHINE.



**WARNING**

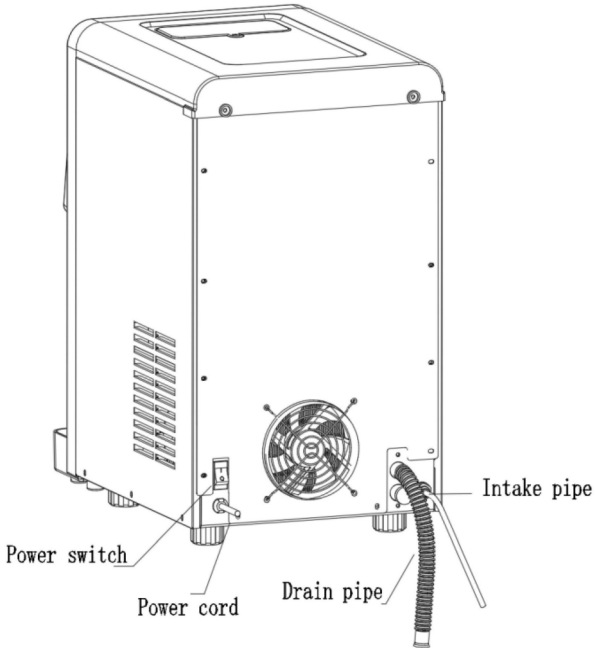
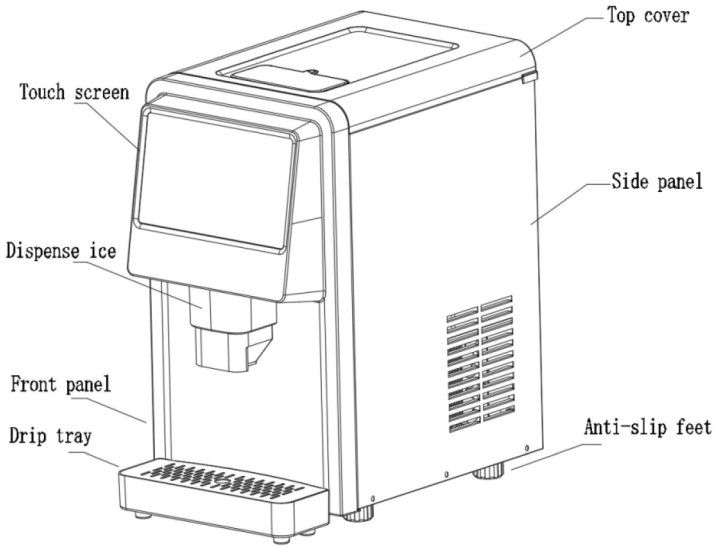
To reduce the risk of fire, explosion, electric shock, exposure to UV radiation, or injury when using your ice maker, follow these basic safety precautions:

- This product must be properly installed and located in accordance with the Installation instructions before it is used.
- When using electrical appliances, basic safety precautions should be followed to reduce the risk of fire, electric shock and injury to persons or property. Read all instructions before using any appliance.
- High humidity environment will increase the risk of short circuit or electric shock. If in doubt, please cut off the power supply of the ice maker.
- Do not exceed power outlet ratings. It is recommended that the ice maker is connected to its own circuit. Use only standard electrical supply that is properly grounded in accordance with the National Electric Code and local codes and ordinances.
- If the ice maker is brought indoors from outdoors during the wintertime, give it a few hours to warm up to room temperature before plugging to power source.
- Do not store explosives, such as combustion-supporting sprays in the appliance.
- The machine is intended to be used in household and similar applications such as:
  - kitchen areas in shops, offices and other working environments;
  - farm houses
  - by clients in hotels, motels and other residential type environments;
  - Catering industry and similar non-retail industry.
- Children and disabled people must be supervised to use this machine
- Avoid direct sunlight and make sure that The machine should be used in the

household and without obstacles surrounded, good ventilation place. There is must be 50cm at least between the four sides of the machine with the wall.

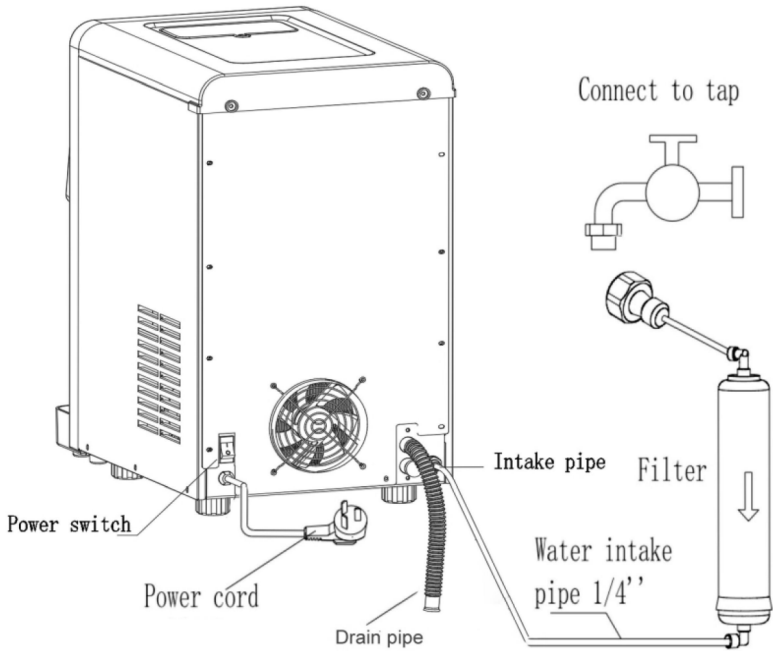
- Do not tip the machine over.
- We do not recommend the use of an extension cord, as it may overheat and become a risk of fire.
- Don't use any liquid other than water in the unit to make the ice.
- Do not store or use flammable vapors or liquids near this product.
- Do not allow children to climb, stand or hang on the ice maker. They could seriously injure themselves.
- Do not use with water that is micro biologically unsafe or of unknown quality.
- To avoid risk of injury, place power cord in such a way it cannot be pulled on by children or cause a tripping hazard.
- Place power cord in such a way that it is not in contact with hot surfaces.
- Do not operate if any component, including the cord or plug, is damaged.
- Unplug the product before cleaning or repairing, and when not in use. (Note: If the machine needs repair, it is strongly recommended that it be operated by professionals.)
- Do not immerse any part of the product in water.
- Do not plug or unplug product with wet hands.
- Do not place the power cord on carpet or other heat sources
- Do not attempt to disassemble, repair, modify, or replace any part of your product.
- Use this product only for its intended purpose as described in this user manual.
- If the power cord is damaged, it must be replaced by the manufacturer or similar professionals in order to avoid danger.
- Do not use any accessories not recommended by the manufacturer.
- The foaming materials inside is combustible which must be kept away from fire.
- It's forbidden to pull the cable to unplug. You should pull the plug directly.
- Except for the method recommended by the manufacturer, no mechanical tools or other methods shall be used to accelerate the defrosting process. Do not damage the refrigeration circuit.
- There are high-pressure, flammable and explosive refrigerants in the compressor. Do not damage the refrigeration system. Care or repair should be carried out by professionals. Be especially careful when installing and transporting.
- There are heat insulation materials in the ice maker, which are combustible materials, and must be kept away from fire sources. Repairs must be carried out by the manufacturer or professionals. Scrap must be disposed of by the designated recycling department.

# Quick introduction:



# Installation and setup

**Caution:** Installation must be installed by professionals.



## Warning:

The drain of inner tank must be always connected to a floor drain.

The drain of internal water tank (Only connect to a floor drain after cleaning, or it must be plugged)

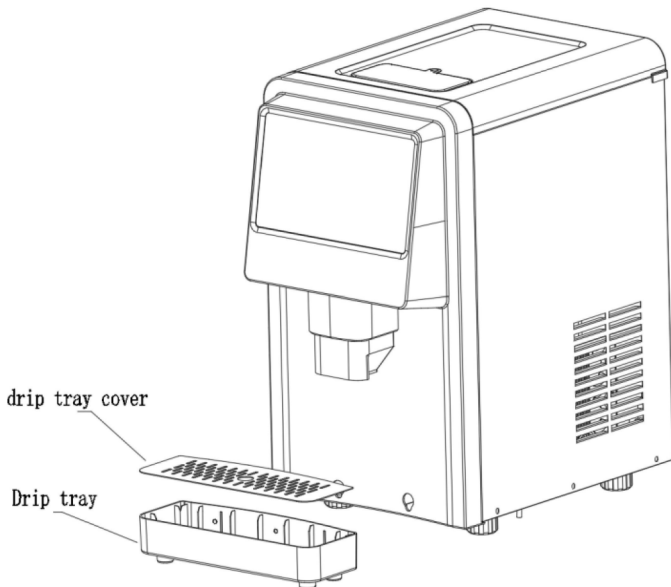
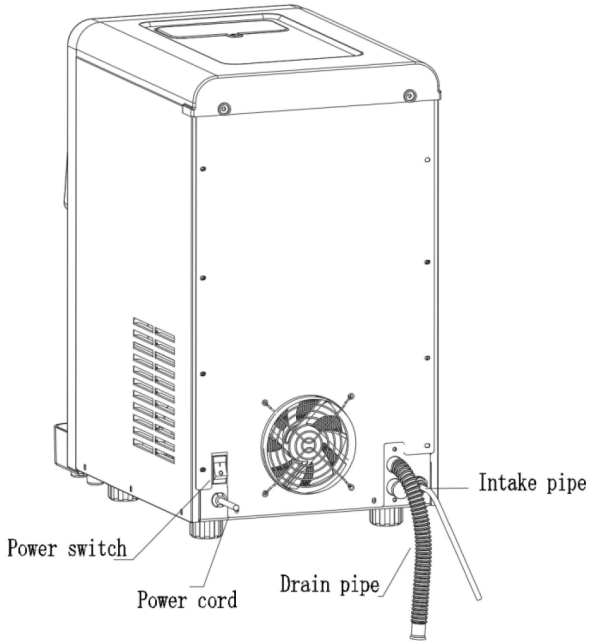
## Installation requirements



**Lifting Hazard:** It is recommended to have two people move and install the ice maker in order to prevent injury.

- Product is designed to be installed indoors. Do not use your ice maker outdoors.
- Product must be installed upright on a flat, level surface that is able to support the total weight when full of water.
- Ensure a minimum of 50cm clearance around the side and back walls of the ice maker for proper air circulation.
- Install the product in a well-ventilated area with an ambient temperature between 3°C and 40°C.
- Do not place the product near heat sources such as ovens or cook tops.

- Do not place the product in direct sunlight or rain.
- Do not place any stuff on the top of the machine.



## Prepare for use

1. Carefully remove packing material. Do not use sharp tools that can damage the ice maker.
2. Ensure all components are present.  
(An assembled filter, 1 drainage pipe and 2 silica plug, drip tray and drip tray cover are a standard on the machine.)
3. Place the ice maker upright on a flat, level surface and plug it in.
4. Clean the ice maker before first use.

## Connect to water and drain pipe

It must be connected to tap water. If there is a problem caused by the tap water without a filter, our company will not bear the cost of repairing.



The water supply pressure should be 0.1-0.4MPa; if the pressure is greater than 0.4MPa, a pressure reducing valve is required.

### (1) Use tap water as water source

The filter you received is assembled, plug the water intake pipe firmly into the connector at the back of the machine until you can't insert it anymore, and the other side connects to the water tap.

### (2) Drain

The drain of the inner tank must be always hooked it up to a floor drain or a container, or the water will leak to floor!



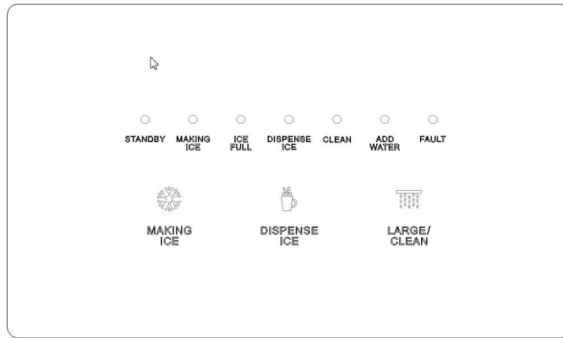
The drain of internal water tank only connect to a floor drain after cleaning, or it must be plugged.

## Understanding the display

### 1. Please make sure:

- (1) The water tap is turned on.
- (2) The drain pipe was inserted into sink or bucket
- (3) The machine is power on.

### 2. Touch screen:



### Control board

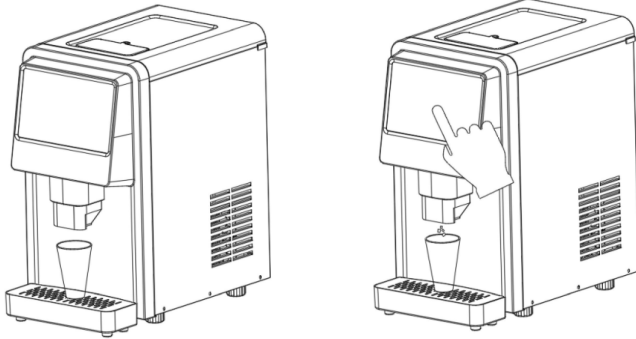
- (1)Standby: Plug the power cord into the socket will make the machine enter standby mode.
  - (2)Touch “ making ice ”,"dispense ice ”,"clean"icon under standby mode,the selected indicator will blink.
  - (3)Making ice: Touch “Making ice”icon under standby mode or“clean”mode to make the machine start to make ice;Long touch this icon for 2 seconds during“ Making ice”mode to make the machine enter standby mode.
  - (4)Dispense ice:Touch this icon under standby or “making ice”mode will make the machine to dispense ice,touch again to stop dispensing.If no ice is dispensed within 30s,it will stop dispensing automatically.If the outlet is jammed,long press this icon for 5s,ice cubes will be dispensed automatically after 25s.
  - (5)Large/Clean: Touch this icon during “making ice” mode will make the machine to dispense ice continuously for 5min,touch again will make the machine stop dispensing ahead of time.
- Long touch the icon for 3s under standby mode to start the self-cleaning progress, touch again to stop the self-cleaning progress. After cleaning,unplug the outlet to drain.Make sure the drain pipe is connected before starting the machine.

### NOTE:

- 1.Clean mode and ice making mode can't be operated at the same time.
  - 2.The two outlets of the machine must be hook up to a floor drain after cleaning.Observe the water flow to avoid overflow.
  - 3.After that,the outlet of the internal water tank must be plugged.
- (1)Ice full:As infrared rays detected no ice fall over 2 min,the machine will stop and the “ice full” indicator will be on,the machine will restart to work as you take some ice out or after the ice melt.

(2)Fault: If no ice fall over 15min for the first cycle,the machine will stop and FAULT indicator will be on.After that,if there is no ice fall over 3min,the machine will stop working and the FAULT indicator will be on.

Warning: The ice machine is used to make and store ice,wash your hands before taking ice.



## Clean and care

1.For long time storage

- a)Power off the machine and pull the plug.
- b)Turn off the faucet and remove the inlet pipe
- c)Take out all the ice,drain the water inside
- d)Dry the ice bin and interior.

2.Daily cleaning

During the working time,more and more scales will precipitate in the water tank.If it is not cleaned in time,it will cause malfunctions.Generally,it needs to be cleaned once a week.Take all nugget ice out,add 10%edible citric acid to the water tank during cleaning,touch the clean icon,it will take about 5min to finish the clean procedure,and then repeatedly rinse with fresh water before using. Observe the water flow at any time during the cleaning mode to avoid overflow,if the water is too swift which lead to overflow,turn down the tap.

3.Clean interior

NOTE: Pull the plug before cleaning or maintaining

To make the machine work normally,check and clean condenser annually.

Don't use alcohol to clean the in-wall of the machine,it will break the plastic materials.

4.Clean exterior

Clean the exterior with detergent weekly

## Common malfunction analysis:

Issues	Check items	Possible causes	Solutions
The machine doesn't work	Power cord	The plug didn't plug into socket	Plug into socket
	The fuse of PCB	The fuse is broken	Replace the fuse
	PCB	Broken	Replace the PCB
	Ice full	Ice full	Take out some ice
	Proximity switch	Proximity switch is broken	Replace the proximity switch
	Power supply	No power or lower voltage	Contact power supply bureau
	Water supply	No water or water pressure is low	Check water source and its pressure
Compressor didn't work or stop working suddenly	Inlet valve	Inlet valve is broken	Replace the inlet valve
	Power supply	No power or lower voltage	Contact power supply bureau
	Air inlet is congested	Ensure that the machine's surrounding space of at least 50 cm of clear of any objects	Air inlet is congested
	Condenser	Too much dust covered	Clean the condenser
No water in the water tank	Refrigerant compressor	Refrigerant leaked Connection wire is broken off	Contact after sales service Contact after sales service
	Water supply	No water or water pressure is low	Check water source and its pressure
Water leakage	Inlet valve	Inlet valve is broken	Replace the inlet valve
	Water inlet	Water inlet is loosened	Re-tightened the water pipe
	Drain pipe	Didn't connect to drain pipe or sewer	Connect to drain pipe or sewer
Stoppage indicator is on	Float	Jammed or broken	Adjust or replace
	No ice during 15min	Refrigeration system	Contact after sales service
Take too long to make ice	There are ice fall into the ice basket	Infrared ray is broken	Contact after sales service
	Water pressure	Lower water pressure	Check the water source
	Water temperature	Water temperature is high	Change to a water source of lower temperature
	Ambient temperature	Ambient temperature is too high or too low	Change to a place of lower temperature
Productions of ice cubes is low and the cube ice is too thin	Refrigerant	Refrigerant leakage	Contact the after sales
	Condenser	Too much dust covered causes bad ventilation., will take too long to make ice	Clean the condenser
	Water pump	Water pump broken	Replace a water pump
	Ambient temperature	Ambient temperature is relative high	Change to a place of lower temperature
Add water indicator is on	Air inlet	Air inlet is congested	Ensure that the machine's surrounding space of at least 50cm is clear of any objects
	Water tank	No water inside Water in the tank	Check the water supply Check the float
Noise	Evaporator	In the beginning of making ice	Normal
	Valve	It worked too long for single time	Restart the machine after the solenoid valve cool off
	Condenser	The sound of the fan scrapes against condenser	Contact the after sales

**If you have any questions, please contact us:**

**Email Address: [support@tittla.com](mailto:support@tittla.com)**

**Phone Number: +1 650 620 1310**