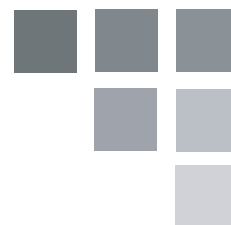




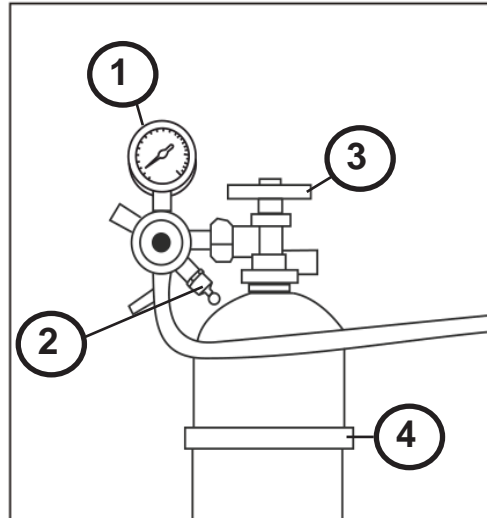
OWNER'S MANUAL
MANUEL DU PROPRIÉTAIRE
MANUAL DEL PROPIETARIO



| | |
|--|----------------|
| KEG COOLER Owner's Manual..... | 1 - 14 |
| GLACIÈRE DE BIÈRE PRESSION Manuel du propriétaire..... | 15 - 28 |
| BARRIL REFRIGERADOR Manual del propietario..... | 29 - 42 |

MODEL • MODÈLE • MODELO
DKC054A1BSLDB

Danby



1. Pressure gauge dial
2. Pressure relief ring
3. Open / Close valve
4. Tank strap

Ensure the CO₂ tank is empty before courier or 3rd party transport.

DANGER - A full or partially full CO₂ tank is under extreme pressure. Uncontrolled release of pressure is extremely dangerous. The instructions below use the regulator to control the release of this pressure in a safe manner. Do not bypass the regulator.

1. Ensure tank is secure
2. Fully open valve by turning counter-clockwise. Pressure gauge dial will show a value if tank contains pressure.
3. Gently pull pressure relief ring. Released gas should be heard.
4. The pressure dial will read zero when the tank is empty. Continue to hold pressure relief open until tank is empty.
5. Release the pressure relief ring.
6. Fully close valve by turning clock-wise.

Welcome

Welcome to the Danby family. We are proud of our quality products and we believe in dependable service. We suggest that you read this owner's manual before plugging in your new appliance as it contains important operation information, safety information, troubleshooting and maintenance tips to ensure the reliability and longevity of your appliance.

Visit www.Danby.com to access self service tools, FAQs and much more. For additional assistance call **1-800-263-2629**.

Note the information below; you will need this information to obtain service under warranty.

You must provide the original purchase receipt to validate your warranty and receive service.

Model Number: _____

Serial Number: _____

Date of Purchase: _____

Need Help?

Before you call for service, here are a few things you can do to help us serve you better.

Read this owner's manual:

It contains instructions to help you use and maintain your appliance properly.

If you receive a damaged appliance:

Immediately contact the retailer or builder that sold you the appliance.

Save time and money:

Check the troubleshooting section at the end of this manual before calling. This section will help you solve common problems that may occur.



1-800-26- Danby
(1-800-263-2629)



Important Safety Information

READ AND FOLLOW ALL SAFETY INSTRUCTIONS

SAFETY REQUIREMENTS

DANGER: Risk of fire or explosion. Flammable refrigerant used. Do not puncture refrigerant tubing.

- Do not use mechanical devices to defrost refrigerator.
- Ensure that servicing is done by factory authorized service personnel, to minimize product damage or safety issues.
- Consult repair manual or owner's guide before attempting to service this product. All safety precautions must be followed.
- Dispose of properly in accordance with federal or local regulations.
- Follow handling instructions carefully.

WARNING: Keep ventilation openings, in the appliance enclosure or in the built-in structure, clear of obstruction.

WARNING: Do not use mechanical devices or other means to accelerate the defrosting process, other than those recommended by the manufacturer.

WARNING: Do not damage the refrigerant circuit.

WARNING: Do not use electrical appliances inside the food storage compartments of the appliance, unless they are of the type recommended by the manufacturer.

CAUTION: Children should be supervised to ensure that they do not play with the appliance.

DANGER: Risk of child entrapment. Before throwing away an old appliance:

- Remove the door or lid.
- Leave shelves in place so that children may not easily climb inside.

This appliance is intended to be used in household and similar applications such as:

- Staff kitchen areas in shops, offices and other working environments;
- Farm houses and by clients in hotels, motels and other residential type environments;
- Bed and breakfast type environments;
- Catering and similar non-retail applications.

SAFETY REQUIREMENTS

This appliance is not intended for use by persons (including children) whose physical, sensory or mental capabilities may be different or reduced, or who lack experience or knowledge, unless such persons receive supervision or training to operate the appliance by a person responsible for their safety.

Do not store explosive substances such as aerosol cans with a flammable propellant in this appliance.

GROUNDING INSTRUCTIONS

This appliance must be grounded. Grounding reduces the risk of electrical shock by providing an escape wire for the electrical current.

This appliance has a cord that has a grounding wire with a 3-prong plug. The power cord must be plugged into an outlet that is properly grounded. If the outlet is a 2-prong wall outlet, it must be replaced with a properly grounded 3-prong wall outlet. The serial rating plate indicates the voltage and frequency the appliance is designed for.

WARNING - Improper use of the grounding plug can result in a risk of electric shock. Consult a qualified electrician or service agent if the grounding instructions are not completely understood, or if doubt exists as to whether the appliance is properly grounded.

Do not connect your appliance to extension cords or together with another appliance in the same wall outlet. Do not splice the power cord. Do not under any circumstances cut or remove the third ground prong from the power cord. Do not use extension cords or ungrounded (two prongs) adapters.

If the power supply cord is damaged, it must be replaced by the manufacturer, its service agent or similar qualified person in order to avoid hazard.

SAVE THESE INSTRUCTIONS!



Important Safety Information

READ AND FOLLOW ALL SAFETY INSTRUCTIONS

WARNING: CO₂ CAN BE DANGEROUS!

CO₂ Cylinders, when charged, contain high pressure compressed gas which can be hazardous if not handled properly. Read and understand the following procedures for CO₂ cylinders before installation:

1. Always check the D.O.T. (Department of Transportation) as well as the T.C. (Transport Canada) test date located on the neck of the cylinder before installation. If the date is older than five (5) years, do not use! Return the gas cylinder to a gas supplier for re-certification (service charges may be applicable).
2. Always connect a CO₂ gas cylinder to a regulator. Failure to do so could result in an explosion which can possibly result in death or injury when the cylinder valve is opened.
3. Always follow correct procedures when cylinders are changed as per local codes.
4. Always secure a CO₂ gas cylinder in an "upright" position.
5. Always keep a CO₂ gas cylinder away from heat. Store extra cylinders in a cool place (preferably 70°F/21°C). Securely fasten with a chain in an upright position when storing.
6. Always ventilate and leave the area immediately after any leakage of CO₂.
7. Never connect a CO₂ gas cylinder directly to a beer keg.
8. Never drop or throw a CO₂ cylinder.
9. Never connect a keg without at least one safety pressure release. There are two safety mechanisms in the pressure system;
 - One at or on the CO₂ regulator.
 - One at or on the product container coupler in the pressure gas line.

Note: The regulator and keg coupler supplied with this appliance are inclusive of such safety mechanisms.

WARNING: CO₂ CAN BE DANGEROUS!

If it becomes difficult to breathe and/or your head starts to ache, abnormal concentrations of carbon dioxide (CO₂) may be present in the area.

CLOSE THE MAIN VALVE ON THE CO₂ CYLINDER, VENTILATE AND LEAVE THE ROOM IMMEDIATELY!

Beer is easily available with Danby's Keg Cooler, however, it is not intended to be available to people under the legal age to consume beer. Danby does not assume liability for the unlawful use or consumption of the beer.

PLEASE DRINK RESPONSIBLY AND PLEASE DON'T DRINK AND DRIVE!

WARNING

CO₂ GAS CAN BE DANGEROUS

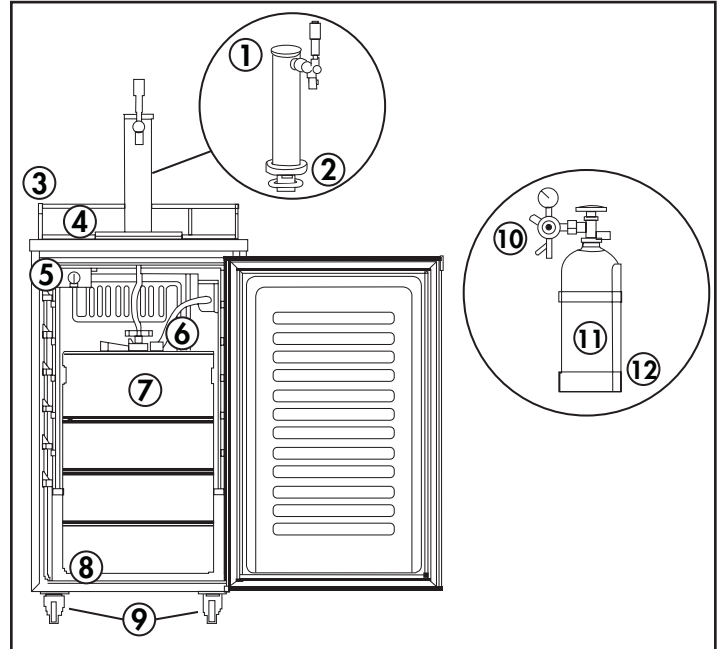
CO₂ cylinders contain high-pressure compressed gas which can be hazardous if not handled properly. Make sure to read and understand all safety procedures for CO₂ cylinders before installation.

SAVE THESE INSTRUCTIONS!

INSTALLATION INSTRUCTIONS

FEATURES

1. Beer Tower
2. Rubber Gasket (may not be required in all configurations)
3. Guard Rail
4. Drip Tray
5. Thermostat dial
6. Keg Coupler
7. Beer Keg (not included)
8. Metal Support Plate
9. Casters
10. CO₂ Regulator
11. CO₂ Tank
12. CO₂ Tank Support



BEFORE USING YOUR KEG COOLER

- Remove the exterior and interior packaging.
- Check to be sure you have all the following parts:
 - 2 guard rails
 - 1 drip tray (2 pieces)
 - 1 CO₂ tank support
 - 1 CO₂ regulator
 - 1 CO₂ tank (empty)
 - 1 CO₂ gas line hose (coloured)
 - 1 beer hose
 - 1 beer keg coupler
 - 1 beer tower
 - 1 faucet handle
 - 1 metal plate for cabinet bottom
 - 3 wire shelves
 - 1 steel clamp for coloured hose
 - 2 plastic washers for front casters
 - 4 casters (2 front with locks)

Note: This appliance includes an American Sankey tap coupler only.

Note: This keg cooler accepts domestic kegs up to 16-1/8" in diameter and up to 23-3/8" in height. Check with the distributor to make sure the keg is correct size.

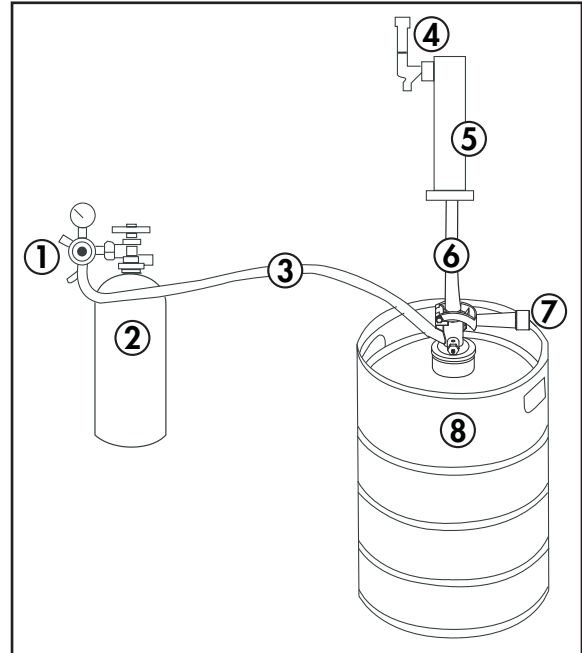
INSTALLATION LOCATION

- Place the appliance on a floor that is strong enough to support it when it is fully loaded.
- Do not place the appliance in direct sunlight or near sources of heat, such as a stove or heater, as this can increase electrical consumption. Extreme cold ambient temperatures may also cause the appliance to perform improperly.
- Do not use the appliance near water, for example in a wet basement or near a sink.
- This appliance is intended for indoor use only. It is not designed for outside installation, including anywhere that is not temperature controlled (garages, porches, vehicles, etc.).
- Before connecting the appliance to a power source, let it stand upright for approximately 6 hours. This will reduce the possibility of a malfunction in the cooling system from handling during transportation.
- This appliance is intended for free-standing installation only and is not intended to be built into a cabinet or counter. Building in this appliance can cause it to malfunction.

INSTALLATION INSTRUCTIONS

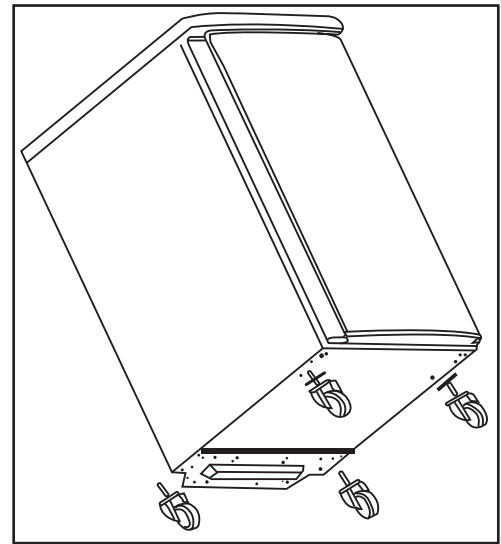
INSTALLATION DIAGRAM

1. CO₂ regulator
2. CO₂ gas tank
3. Coloured CO₂ hose
4. Faucet assembly
5. Tower
6. Clear hose
7. Coupler
8. Keg



CASTER INSTALLATION INSTRUCTIONS

Install the four casters. The two locking casters should be placed at the front. Four screw holes have been pre-drilled into the bottom of the cabinet at each corner for each caster. Put the plastic washers provided on the front casters before installing them.



CASTOR BRAKES

The two front casters are supplied with brakes to ensure the appliance does not move excessively while being used. It is recommended to engage the brakes while the appliance is in use to avoid damage to the appliance, the contents or personal property.



INSTALLATION INSTRUCTIONS

INSTALLATION OF CO₂ TANK SUPPORT

Install the metal support onto the four studs located on the exterior back wall of the cabinet.

Align the holes in the support with the studs and push down firmly.



INSTALLATION OF CO₂ TANK AND CO₂ REGULATOR

The CO₂ tank does not come filled. The tank must be filled with CO₂ before use.

Place the charged tank into the support stand.

Attach the CO₂ regulator to the tank by turning the regulator nut onto the tank valve, making sure the washer is securely inserted into the connecting nut. Tighten snug using an adjustable wrench (not supplied) and ensure there are no leaks, i.e. no hissing sounds when the CO₂ is turned on.



INSTALLATION OF CO₂ AIR LINE AND CONNECTION TO CO₂ REGULATOR

Remove the plug located at the exterior back of the cabinet, in the top left hand corner. Save the plug for later use to convert the appliance to a refrigerator.

Feed the gas line through the cabinet and out through the uncovered hole.

Attach the open end of the hose to the hose barb connection on the regulator. Secure the hose by using one clamp provided. Use pliers or a screwdriver to tighten the clamp to prevent leaks.

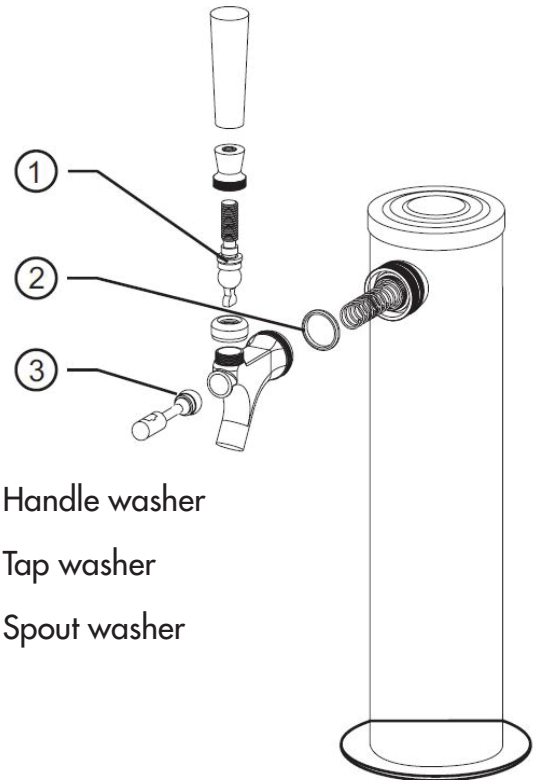


INSTALLATION INSTRUCTIONS

INSTALLATION OF THE BEER TOWER

- Remove the plug from the top of the fridge cabinet by twisting and pulling out. Save the plug for later use to convert the appliance to a refrigerator.
- Unravel the beer line (clear hose) from the tower and insert the beer line and wing nut through the uncovered hole on top of the cabinet.
- Secure the beer tower assembly to the top of the cabinet by pressing down and turning the tower to lock in place. Ensure the faucet is aligned with the front of the appliance.
- The rubber gasket can be used to make the connection between the tower and the cooler tighter if needed. If the beer tower will not turn to lock in place, try removing the rubber gasket. The rubber gasket may not be required in all configurations.

Note: If the faucet is leaking or if the beer is very foamy, ensure that the washers inside the faucet are intact. Replace the washers with spare parts from the accessory bag, if necessary.



1. Handle washer
2. Tap washer
3. Spout washer

FAUCET WRENCH

The provided faucet wrench is for either removing or tightening the faucet connection. If the beer is not flowing freely, use the wrench to remove the faucet for cleaning. If the faucet connection is leaking, use the wrench to tighten the faucet connection.

PLASTIC FAUCET HANDLE

Attach the black plastic handle to the top of the faucet. Hold the silver nut underneath so it does not turn. If there is a small drip from the faucet, the silver nut may be overtightened. Unscrew silver nut counter-clockwise by one turn.

INSTALLATION OF THE PROTECTIVE METAL PLATE

The protective metal plate should be installed on the bottom of the inside of the cabinet. This plate should always be installed when a keg is in place to protect the floor of the cabinet from damage.

INSTALLATION OF THE BEER KEG

- Two people should lift the keg to avoid back injury
- Position the keg directly in front of the open door.
- Using the keg handles, lift the front of the keg just enough so the front end is resting on the front edge of the keg cooler bottom cabinet.
- Grasp the keg handles and slide it all the way into the cabinet.

INSTALLATION INSTRUCTIONS

INSTALLATION OF THE CO₂ AIR LINE HOSE

Attach the end of the coloured air line hose to the hose connection on the side of the coupler. Ensure that the reed valve is inserted into the connection, number 4 on the image below.

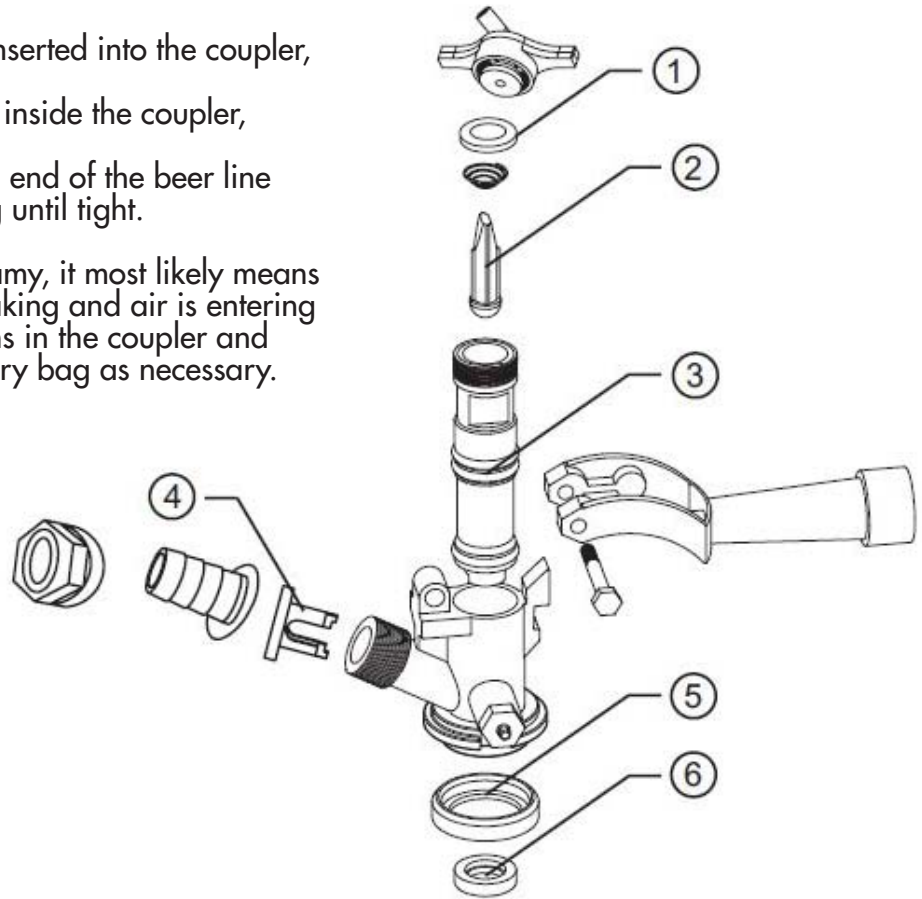
If, after assembly, beer will not flow, ensure that the reed valve has a small hole in it. If there is no hole in the reed valve then CO₂ cannot enter the line and the beer will not flow.

CONNECTING THE BEER TOWER TO THE COUPLER

- Ensure all washers are properly inserted into the coupler, as per the below image.
- Ensure the check valve is in place inside the coupler, number 2 on the below image.
- Place the wing nut attached to the end of the beer line into the top of the coupler, turning until tight.

If, after assembly, the beer is very foamy, it most likely means that a connection in the coupler is leaking and air is entering the lines. Double check all connections in the coupler and replace the washers from the accessory bag as necessary.

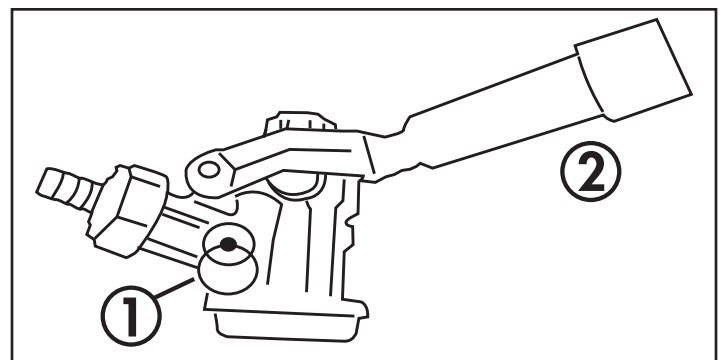
1. Valve washer
2. Check valve
3. O-type washer
4. Reed valve
5. Valve washer
6. Valve washer



INSTALLATION OF THE KEG COUPLER

Insert the keg coupler into the locking neck of the beer keg and turn it clockwise to lock into position, making sure the keg coupler handle is in the closed position, with the handle up.

1. Coupler pressure release valve
2. Handle in closed position

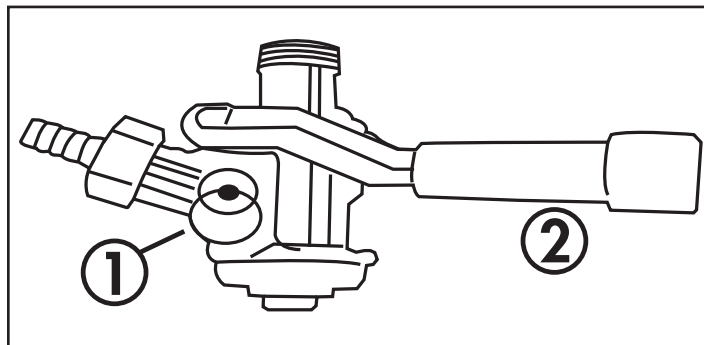


OPERATING INSTRUCTIONS

HOW TO TAP A KEG OF BEER

- Make sure the CO₂ is turned off and the valve on the regulator is in the closed position.
- Pull out and release the pressure release valve on the coupler to purge any air pressure.
- Make sure the faucet handle is in the closed position.
- Pull the coupler handle out and downward until it locks into its open position. The teeth on the underside of the coupler will bite into the locking neck of the beer keg.

Note: If a keg is very tall, it may be necessary to connect the coupler to the keg before inserting the keg into the keg cooler.



1. Coupler pressure release valve
2. Handle in open position

OPENING THE CO₂ TANK MAIN VALVE

- Make sure the secondary shut-off valve (shown below in “open” position) is closed. To open the main CO₂ cylinder valve, slowly turn the main valve counter-clockwise until fully open.
- Notice the needle on the regulator gauge start to climb.

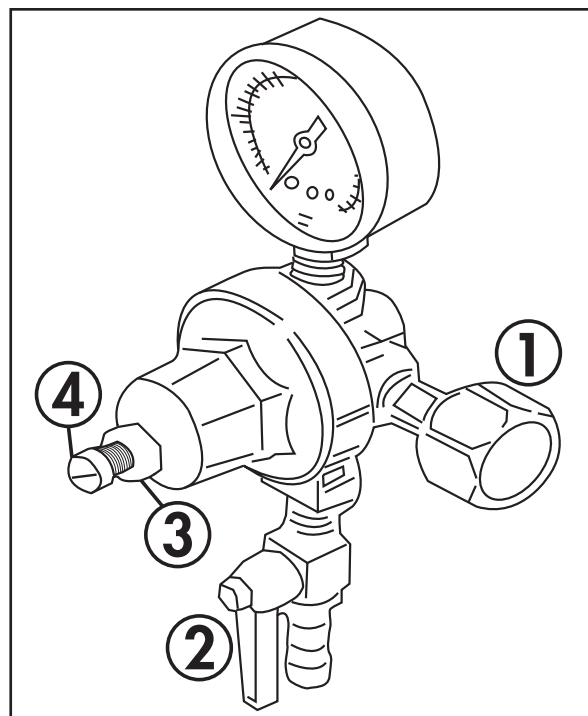
ADJUSTING THE CO₂ REGULATOR

The gauge monitors internal keg pressure and should be adjusted to read between 8-12 PSI. The pressure can be adjusted as needed. After making any adjustment to the PSI, wait 5 - 10 minutes before attempting to pour another beer to allow the pressure to equalize.

- If the beer is very foamy, try turning the pressure down.
- If the flow of beer is very weak, try turning the pressure up.

1. Loosen the lock nut.
2. Turn the adjustment screw with a flat screwdriver.
 - To increase pressure, turn screw clockwise.
 - To decrease pressure, turn screw counter-clockwise.
3. Allow several minutes for the keg to properly pressurize before adjusting the pressure further. The regulator gauge may drop while this happens.
4. Retighten the lock nut to ensure the pressure does not get adjusted accidentally.

Note: Listen for hissing along all connections to identify if there are any leaks.



1. Connection to CO₂ tank
2. Shut off valve (open position)
3. Lock nut
4. Adjustment screw

OPERATING INSTRUCTIONS

DISPENSING OF BEER

- Keep beer keg refrigerated at all times.
- Never allow beer lines to dry out.
- Use clean glassware before pouring.
- Hold glass at a 45° angle, when it is 2/3 full, start to straighten glass as the glass fills.
- Always make sure the faucet handle is pushed all the way back.

Note: The refrigerator compartment cannot accommodate the "Coors" style beveled barrel keg.

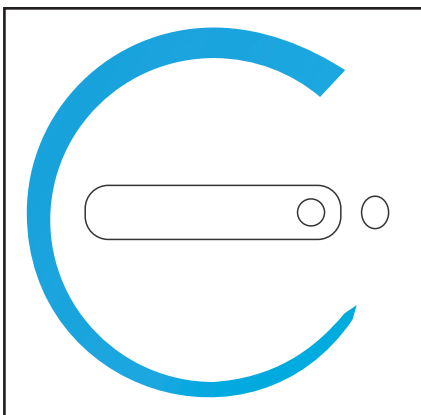
Note: Our keg cooler accepts domestic kegs up to 16-1/8" in diameter and up to 23-3/8" in height. Check with your distributor to make sure keg is correct size.

Note: It is important to allow the keg to sit upright and undisturbed, for 2 hours before tapping.

SETTING THE TEMPERATURE

The temperature is controlled by adjusting the thermostat control knob.

- The thinnest part of the dial is the warmest setting.
- The thickest part of the dial is the coldest setting.
- To turn off the cooling, rotate the control knob to the "0" (OFF) position.



AUTOMATIC DEFROSTING

There is no need to defrost the keg cooler. Defrost water collects and passes through the drain outlet in the rear wall into a tray located above the compressor, where it evaporates.

Note: If the appliance is unplugged, power lost or turned off, wait 3 to 5 minutes before restarting the appliance. If there is an attempt to restart before this time delay, the compressor may not start.

CONVERTING TO A REFRIGERATOR

1. Turn the thermostat dial to the "OFF" position.
2. Close the main valve on the CO₂ cylinder.
3. Close the secondary shut-off valve on the regulator pipe.
4. Close the connection between the beer keg and the keg coupler.
5. Drain any remaining beer from the lines. (We recommend cleaning at this point, please see Care and Maintenance section).
6. Disconnect the beer line and CO₂ gas line from the keg coupler.
7. Remove the beer keg.
8. Remove the keg coupler.
9. Disconnect the gas line from the CO₂ cylinder.
10. Remove the CO₂ gas line from cabinet plug.
11. Replace the gas line rear cabinet plug.
12. Remove the beer tower. Also pull the beer line through the top of the cabinet.
13. Replace the top cabinet plug.
14. Adjust the temperature as desired.

Note: In order to convert the appliance, the gas line must be disconnected from the regulator in order to remove it from the cabinet.

Note: Install the shelf by sliding it into the desired spot in the appliance.

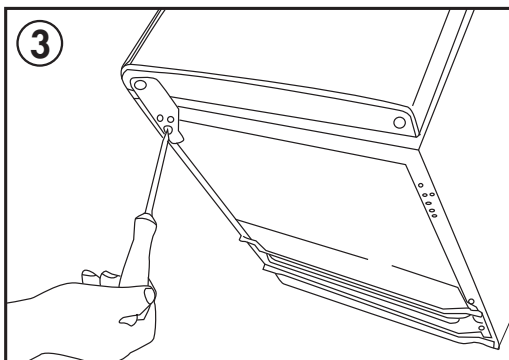
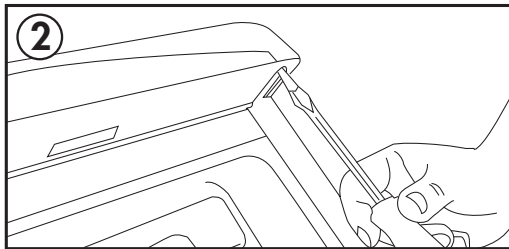
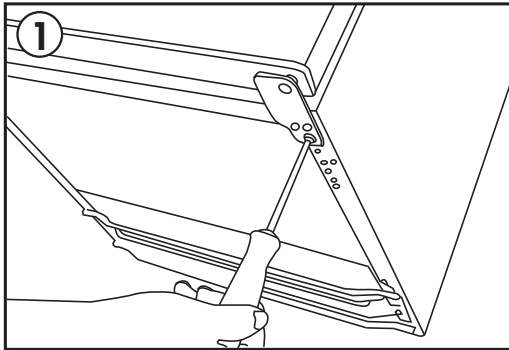
OPERATING INSTRUCTIONS

DOOR REVERSAL INSTRUCTIONS

If the appliance is placed on its back or side for any length of time during this process, it must be allowed to remain upright for 6 hours before plugging it in to avoid damage to internal components.

1. Remove the lower hinge from the bottom right side of the cabinet. Remove the door from the cabinet.
2. Remove the hinge pin from the upper right side of the cabinet. Install it on the upper left side of the cabinet.
3. Install the door on the cabinet and install the lower hinge on the bottom right side of the cabinet.

Note: Ensure the top of the door is level with the top of the cabinet and that the rubber gasket is making a good seal with the cabinet all the way around before tightening the screws.



CARE & MAINTENANCE

CLEANING THE KEG COOLER

- Turn the temperature control to "OFF", unplug the keg cooler, and remove the contents.
- Wash the inside surfaces with a warm water and baking soda solution. The solution should be 2 tablespoons of baking soda to a quart of water.
- Wash the shelves and stand with a mild detergent solution.
- Wipe down any electrical controls with a dry cloth.
- Wash the outside cabinet with warm water and mild liquid detergent. Rinse well and wipe dry with a clean soft cloth.

CLEANING THE BEER LINES

Beer lines have to periodically be cleaned because of a crystallized sugar build up which forms on the fittings, lines and taps. If the build up is not completely removed in a cleaning process it will leave an unsanitary surface that can harbor microorganisms which will cause an undesirable flavour and/or cause the beer to go flat. Sufficient build up will also lead to dispensing problems ranging from foamy beer to flat beer, regardless of the carbonation levels or the quality or age of the beer in the keg.

Scheduled line and faucet cleaning eliminates the build-up, protecting the integrity of the product and condition of the dispensing system and seals. The beer line should be cleaned and rinsed with hot water approximately once every three weeks or every other keg - whichever comes first. The faucet should be cleaned with hot water on a weekly basis or prior to every use if not used on a regular basis.

Note: If the faucet handle becomes stuck or hard to move, this is usually indicative that it requires cleaning. DO NOT apply force to move the handle in this situation, as this can lead to damaging the handle or faucet and will not be covered by the warranty.

TROUBLESHOOTING

Danby Consumer Care: 1-800-263-2629

Hours of operation:

Monday to Thursday 8:30 am - 6:00 pm Eastern Standard Time

Friday 8:30 am - 4:00 pm Eastern Standard Time

Information in this manual is subject to change without notice.

| PROBLEM | POSSIBLE CAUSE |
|--|---|
| The unit does not operate | <ul style="list-style-type: none"> • Not plugged in • The circuit breaker tripped or blown fuse |
| Turns on and off frequently | <ul style="list-style-type: none"> • The room temperature is hotter than normal • The door is open too often • The door is not closed completely • The temperature control is not set correctly • The door gasket does not seal properly • The unit does not have proper clearance |
| Vibrations | <ul style="list-style-type: none"> • Check that the keg cooler is level |
| The keg cooler seems to make too much noise | <ul style="list-style-type: none"> • The rattling noise may come from the flow of refrigerant, which is normal • Gurgling, caused by liquid refrigerant cycling is normal • Contraction and expansion of the inside walls may cause popping and crackling noises • The keg cooler is not level |
| The door will not close properly | <ul style="list-style-type: none"> • The keg cooler is not level • The door was reversed and not properly reinstalled • The gasket is dirty • The shelves or stand are out of position • The keg is not properly centered in the unit • The casters are not attached |
| Excessive beer foam | <ul style="list-style-type: none"> • Ensure the beer line hose from the tower and the CO₂ air line hose from the CO₂ regulator are attached to the correct connections on the coupler; beer line to the top of the coupler, CO₂ air line to the side of the coupler • Check that there are no leaks in any connections • Ensure that the reed valve in the CO₂ connection at the coupler has a hole in it • The CO₂ pressure may be set too high; try turning the pressure down • Ensure that the check valve is inserted into the coupler • Ensure the beer lines are clean |
| Weak beer flow | <ul style="list-style-type: none"> • Ensure the beer line hose from the tower and the CO₂ air line hose from the CO₂ regulator are attached to the correct connections on the coupler; beer line to the top of the coupler, CO₂ air line to the side of the coupler • Check that there are no leaks in any connections • Ensure that the reed valve in the CO₂ connection at the coupler has a hole in it • The CO₂ pressure may be set too low; try turning the pressure up • Ensure there are no bends or kinks in any of the hoses that could impede flow • Ensure the beer lines are clean |

LIMITED "IN HOME" WARRANTY

This quality product is warranted to be free from manufacturer's defects in material and workmanship, provided that the unit is used under the normal operating conditions intended by the manufacturer.

This warranty is available only to the person to whom the unit was originally sold by Danby Products Limited (Canada) or Danby Products Inc. (U.S.A.) (hereafter "Danby") or by an authorized distributor of Danby, and is non-transferable.

TERMS OF WARRANTY

Plastic parts are warranted for thirty (30) days from the date of purchase, with no extensions provided.

First 12 months During the first **twelve (12) months**, any functional parts of this product found to be defective, will be repaired or replaced, at warrantor's option, at no charge to the original purchaser.

To obtain service Contact the dealer where the unit was purchased, or contact the nearest authorized Danby service depot, where service must be performed by a qualified service technician. If service is performed on the unit by anyone other than an authorized service depot, all obligations of Danby under this warranty shall be void.

Boundaries of in-home service Danby reserves the right to limit the boundaries of "In Home Service" to the proximity of an authorized service depot. Any appliance requiring service outside the limited boundaries of "In Home Service", will be the consumer's responsibility to transport at their own expense to the original point of purchase or a service depot for repair. If the appliance is installed in a location that is **100 kilometers (62 miles)** or more from the nearest service center, it must be delivered to the nearest authorized Danby Service Depot by the purchaser.

Transportation charges to and from the service location are not protected by this warranty and are the responsibility of the purchaser.

Nothing within this warranty shall imply that Danby will be responsible or liable for any spoilage or damage to food or other contents of this appliance, whether due to any defect of the appliance, or its use, whether proper or improper.

EXCLUSIONS

Save as herein provided, by Danby, there are no other warranties, conditions, representations or guarantees, express or implied, made or intended by Danby or its authorized distributors and all other warranties, conditions, representations or guarantees, including any warranties, conditions, representations or guarantees under any Sale of Goods Act or like legislation or statute is hereby expressly excluded. Save as herein provided, **Danby shall not be responsible for any damages to persons or property, including the unit itself, howsoever caused or any consequential damages arising from the malfunction of the unit and by the purchase of the unit, the purchaser does hereby agree to indemnify and hold harmless Danby from any claim for damages to persons or property caused by the unit.**

GENERAL PROVISIONS

No warranty or insurance herein contained or set out shall apply when damage or repair is caused by any of the following:

- 1) Power failure.
- 2) Damage in transit or when moving the appliance.
- 3) Improper power supply such as low voltage, defective house wiring or inadequate fuses.
- 4) Accident, alteration, abuse or misuse of the appliance such as inadequate air circulation in the room or abnormal operating conditions (ie. extremely high or low room temperature).
- 5) Use for commercial or industrial purposes (ie. If the appliance is not installed in a domestic residence).
- 6) Fire, water damage, theft, war, riot, hostility, acts of God such as hurricanes, floods etc.
- 7) Service calls resulting in customer education.
- 8) Improper Installation (ie. Building-in of a free standing appliance or using an appliance outdoors that is not approved for outdoor application, including but not limited to: garages, patios, porches or anywhere that is not properly insulated or climate controlled).

Proof of purchase date will be required for warranty claims; retain bills of sale. In the event that warranty service is required, present the proof of purchase to our authorized service depot.

**Warranty Service
In Home**

Danby Products Limited
PO Box 1778, Guelph, Ontario, Canada N1H 6Z9
Telephone: (519) 837-0920 FAX: (519) 837-0449

**1-800-263-2629
04/17**

Danby Products Inc.
PO Box 669, Findlay, Ohio, U.S.A. 45840
Telephone: (419) 425-8627 FAX: (419) 425-8629